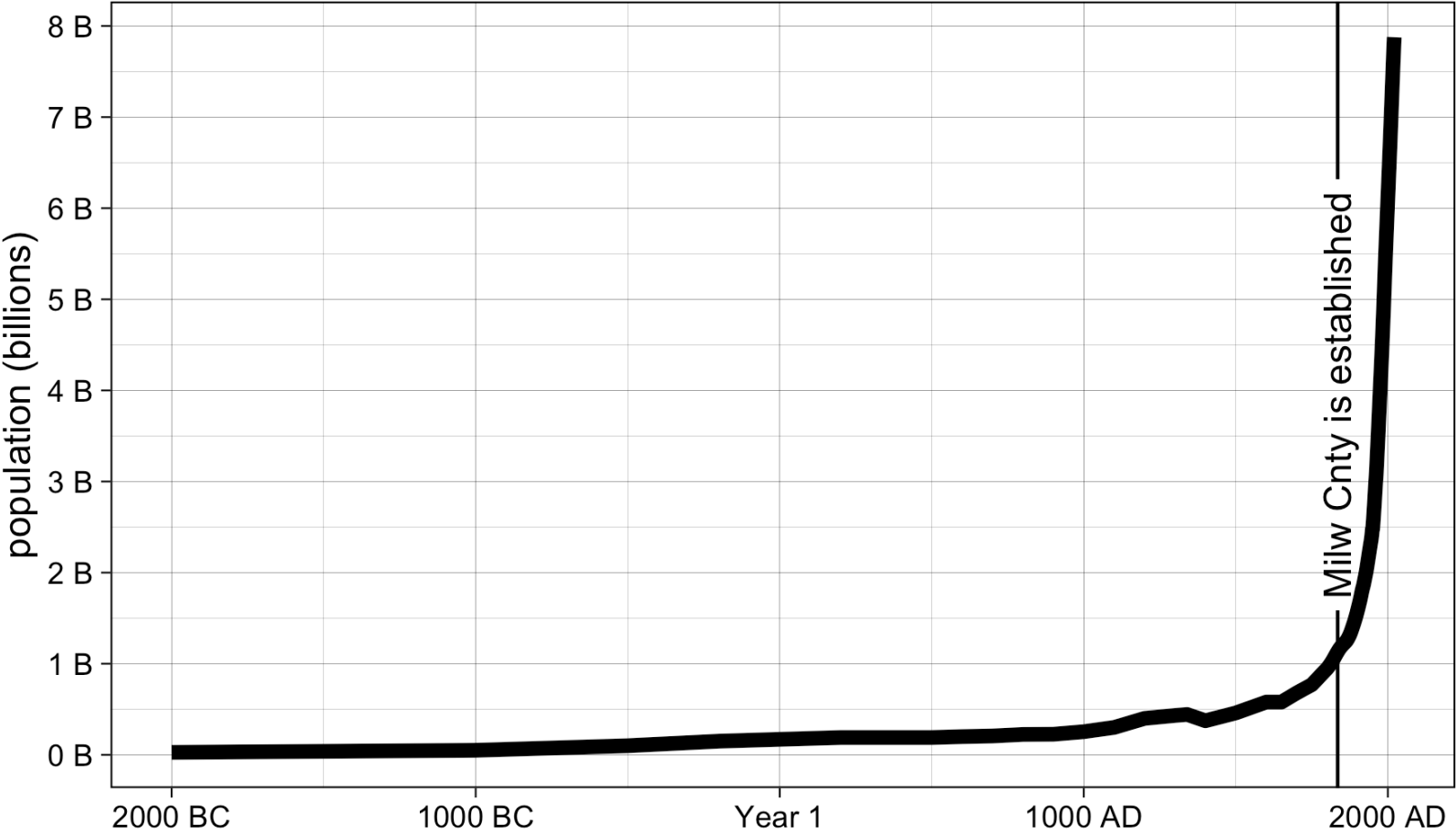


# Milwaukee's Population Trajectory

John D. Johnson  
Lubar Center  
Marquette Law School

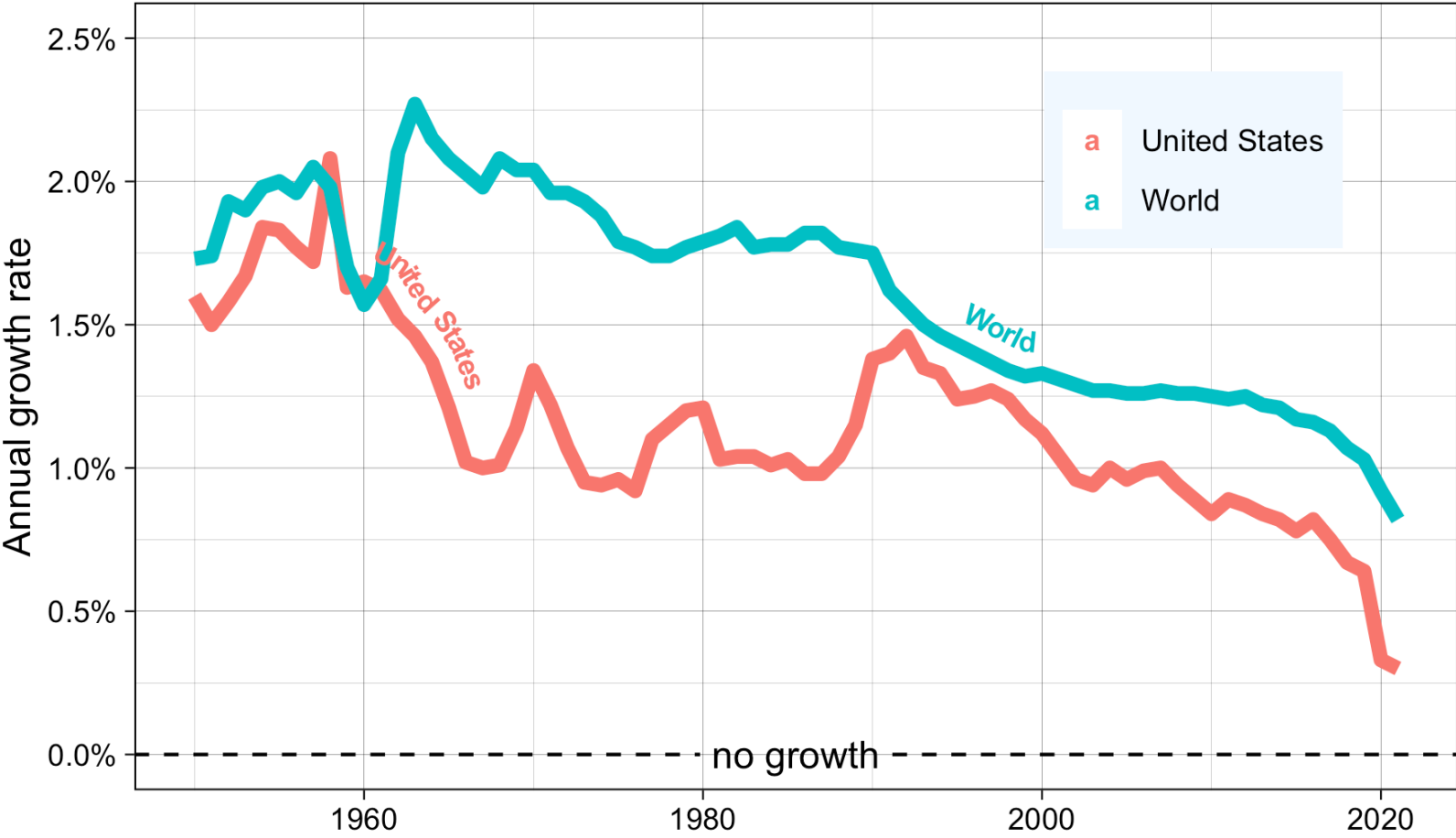
# World Total Population over the past 4,000 years

Source: Gapminder composite estimates



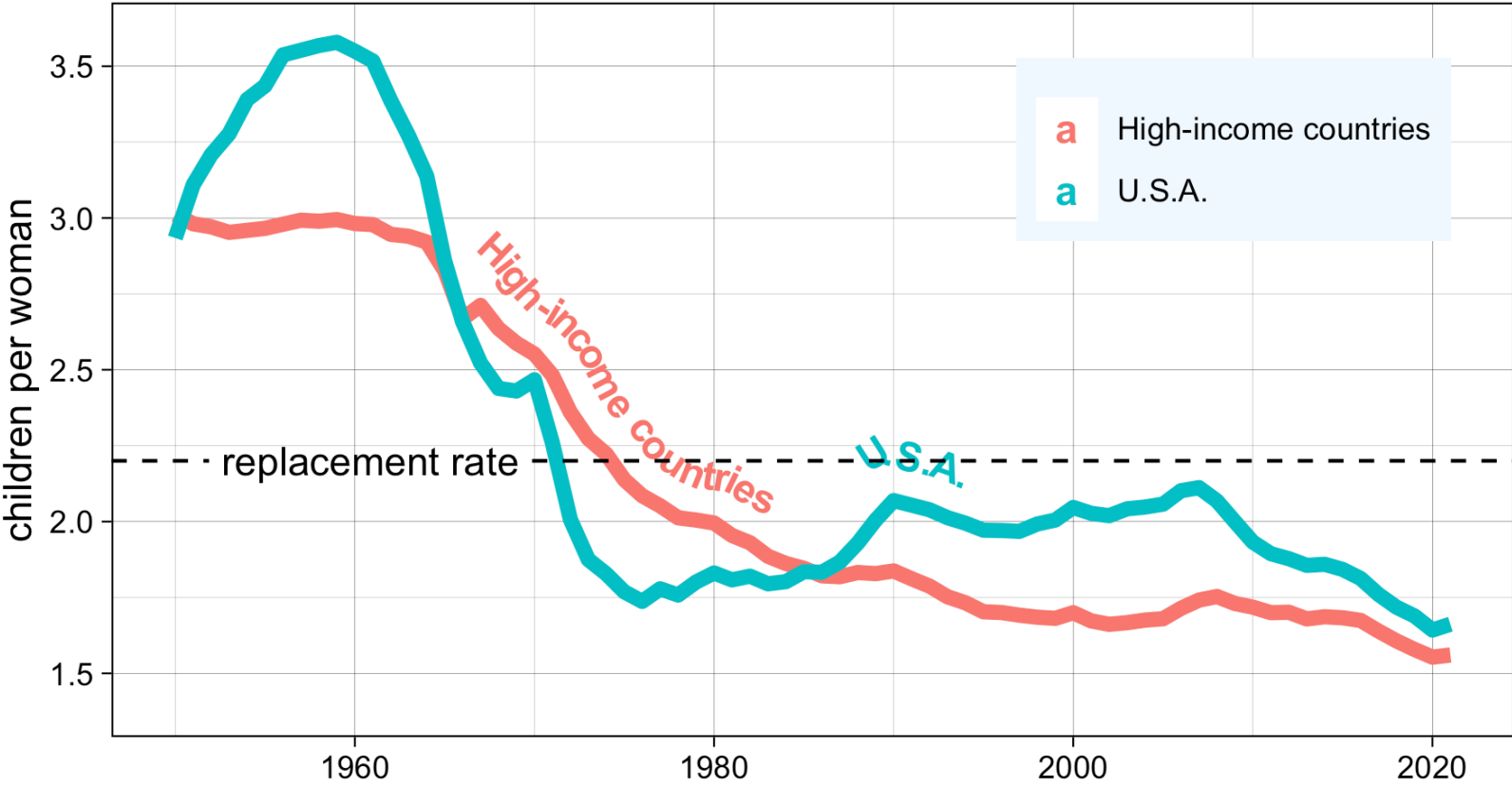
# Annual growth rate in the U.S.A. vs. the world

source: OurWorldInData.com



# Total fertility rate (children per woman)

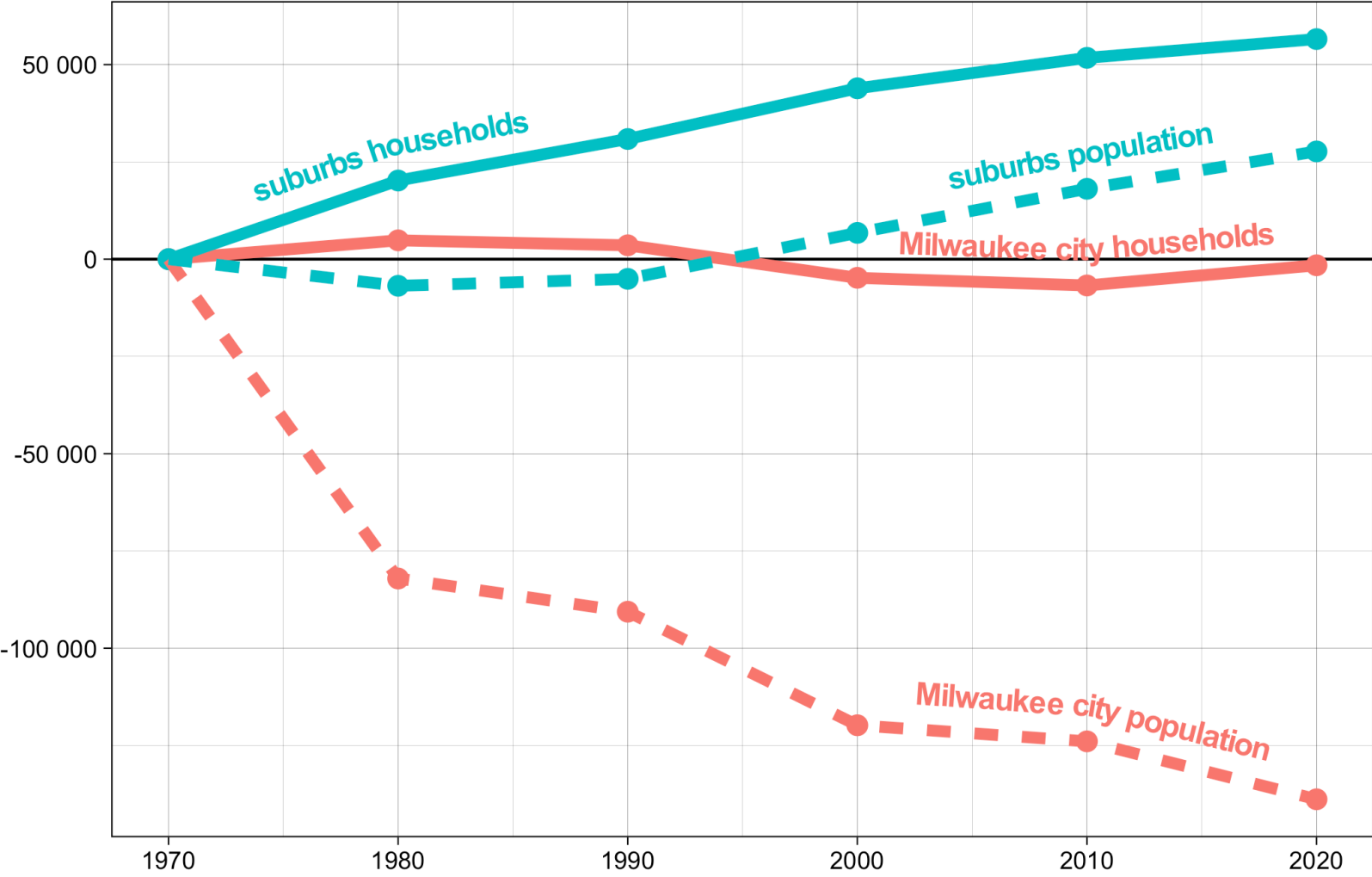
source: OurWorldInData.com



The total fertility rate is the number of children that would be born to a woman if she were to live to the end of her child-bearing years and give birth to children at the current age-specific fertility rates.

# Change in households and population since 1970

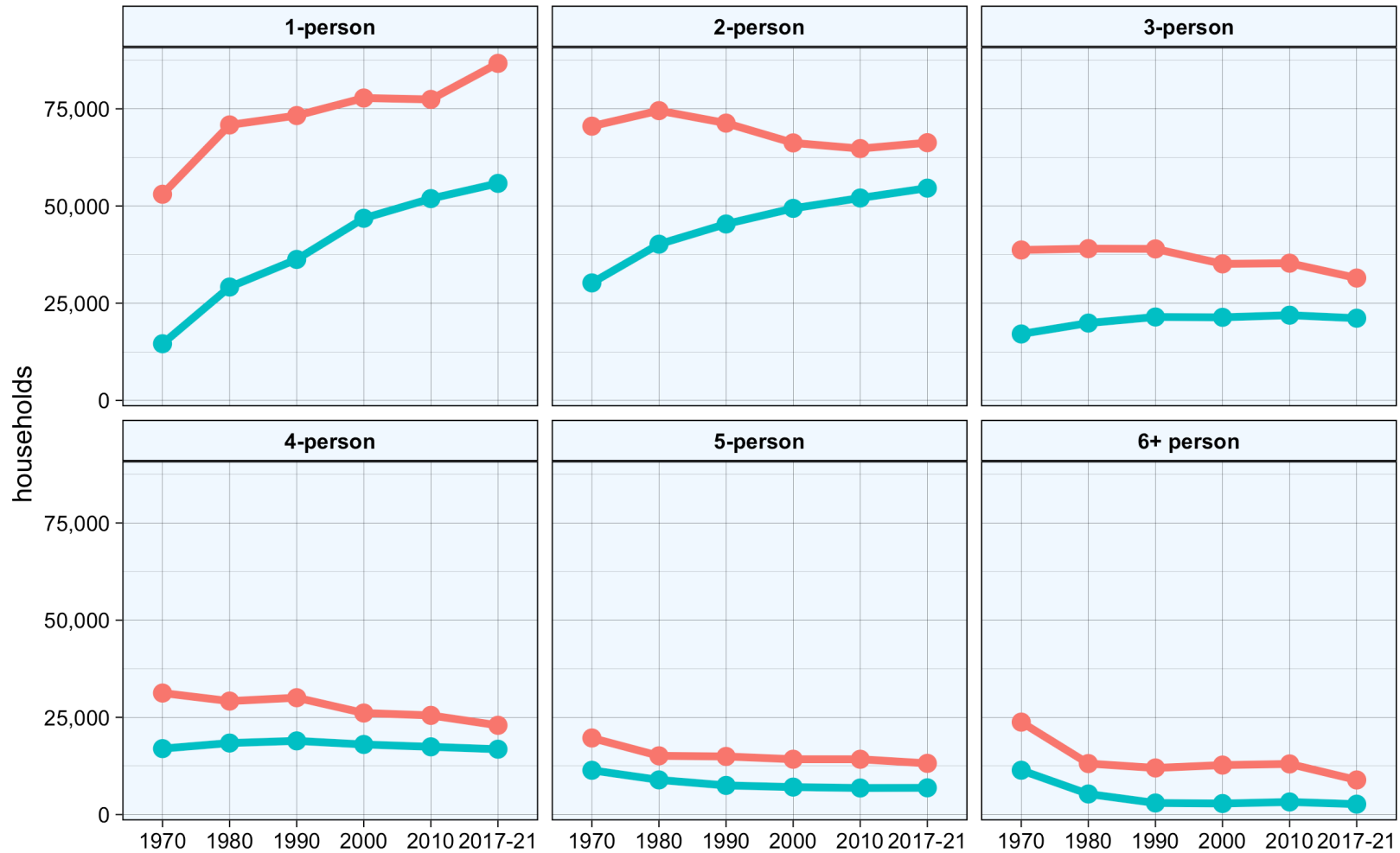
in the City of Milwaukee vs. the Milwaukee County suburbs, excludes group quarters population



# Number of households, by household size

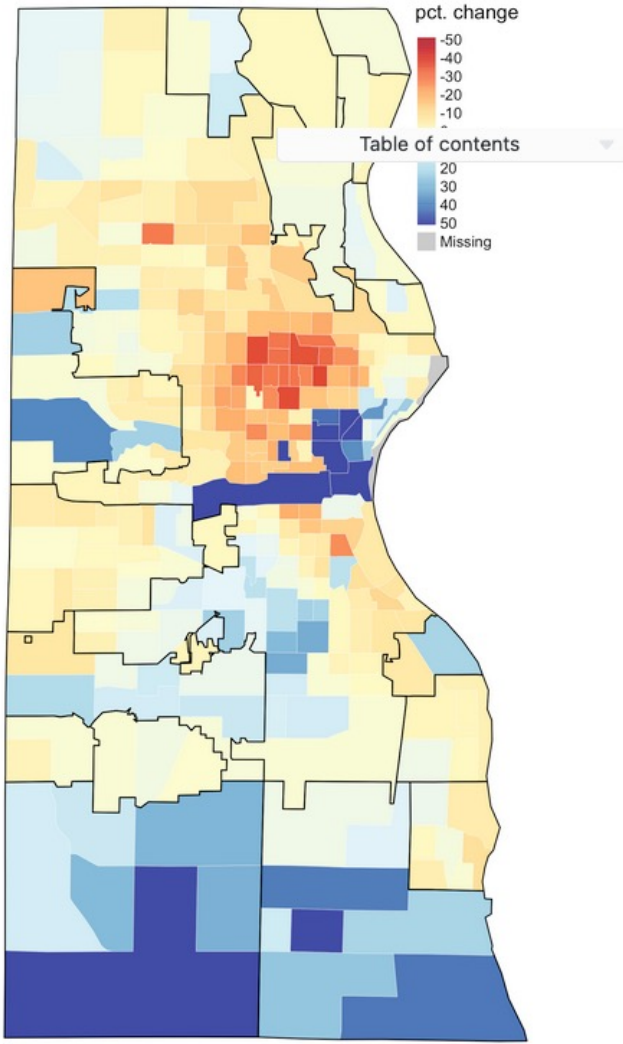
City of Milwaukee vs. Milwaukee County suburbs

Milwaukee city    suburbs

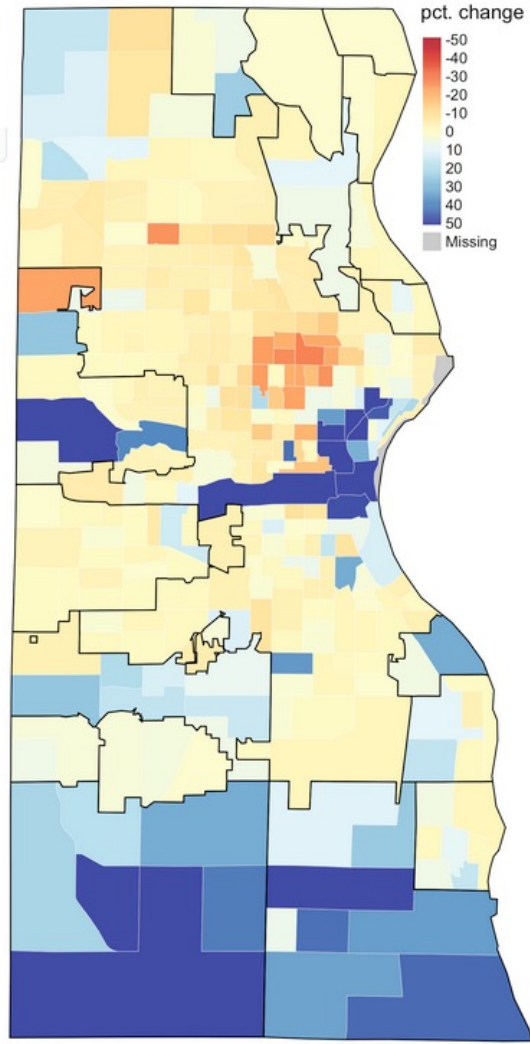




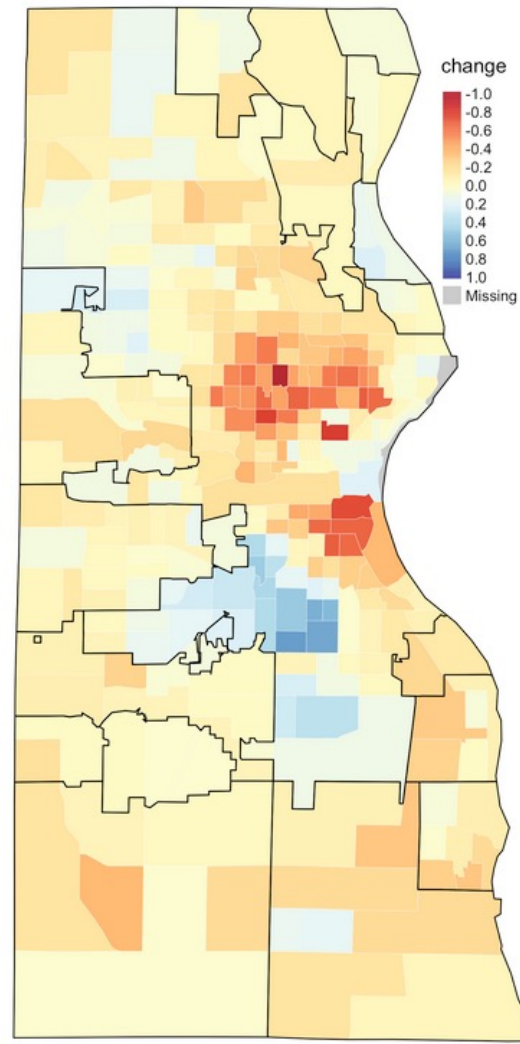
Pop. change, 2000 - 2020



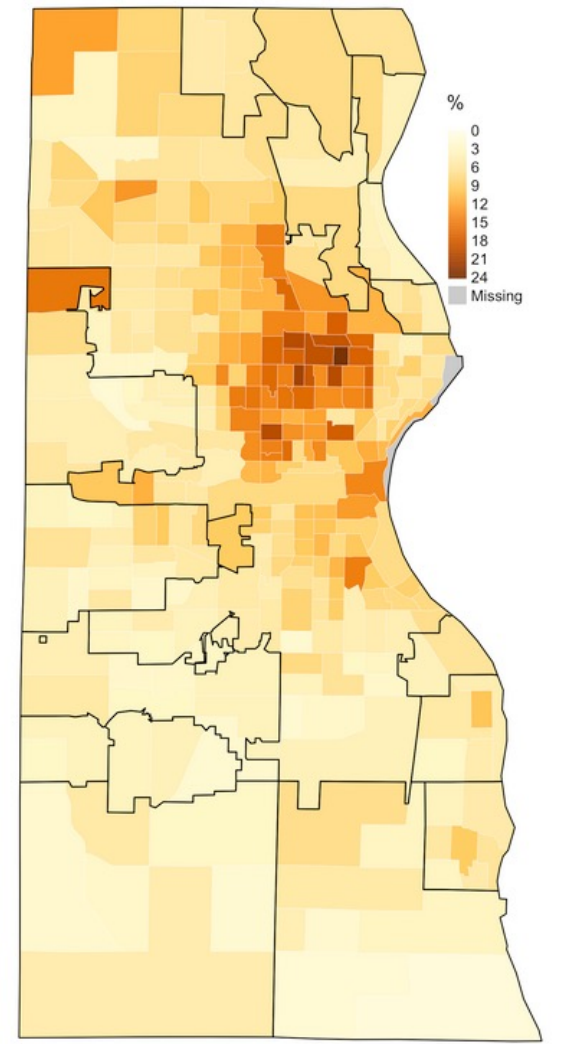
Households change, 2000 - 2020

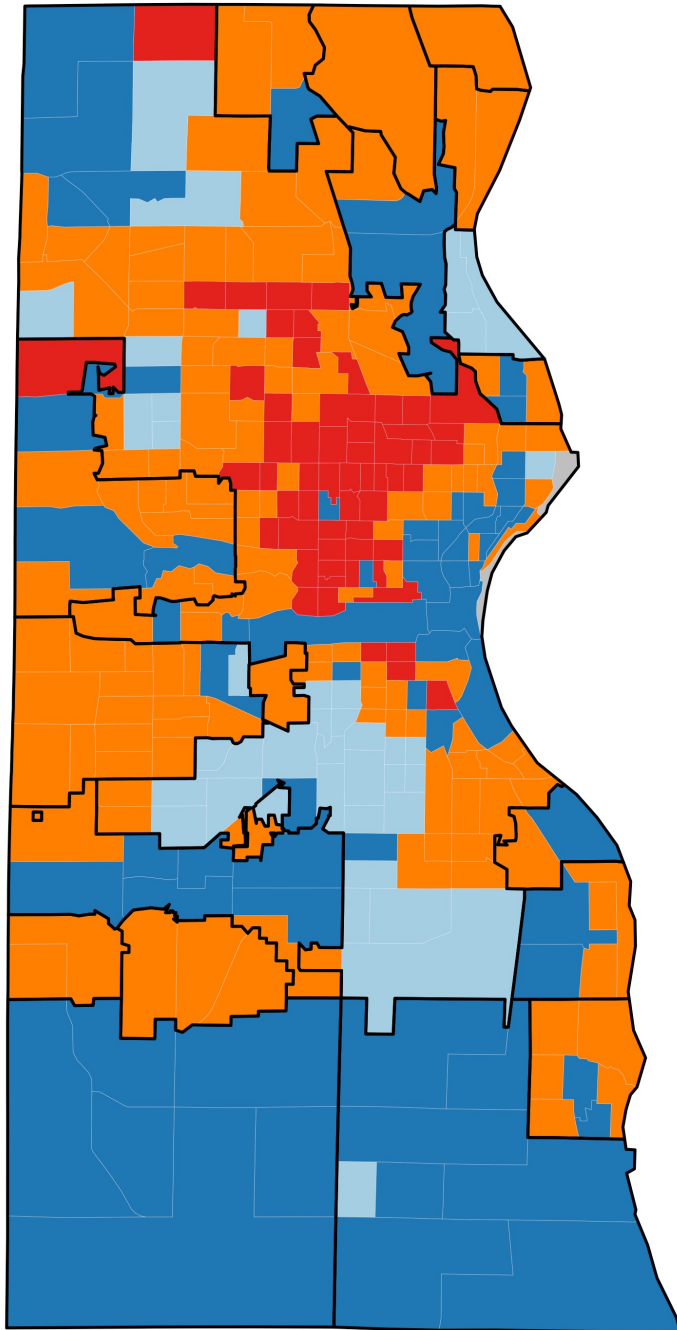


Household size change, 2000 - 2020



Vacancy rate, 2020





# Milwaukee County Population Trends, 2000 - 2020

excludes group quarters population

growth trajectory	pop. totals		pop. change		tracts
	2000	2020	#	%	

## Milwaukee city

Building boom	81K	99K	18K	23%	34
Growth driven by family size	109K	118K	9K	8%	33
Stable decline	244K	230K	-14K	-6%	86
Depopulating	153K	121K	-32K	-21%	57

## suburbs

Building boom	121K	144K	23K	19%	32
Growth driven by family size	21K	23K	1K	7%	6
Stable decline	182K	179K	-3K	-2%	51
Depopulating	5K	4K	-836	-17%	1

Statistics are based on a comparison of 2000 and 2020 census data.