

Spring 2024 is in full swing!

As we start the new semester, I want to express my gratitude to the ADVANCE team and to all faculty in the Marquette ADVANCE community for the on-going great work in helping create better equity and inclusion to support faculty success. This will be the final full semester for ADVANCE as the grant is coming to an end. Watch for upcoming ADVANCE programs, including next steps for both of our AMP workstreams (post-award services and building a mentoring culture). Best wishes for a great spring semester!

~ Jeanne



Keep an eye out for ADVANCE 2024 events!

Including: workshops for Chairs, disability & accessibility, Advocates & Allies, socials, & more!

CONFERENCE GOERS DISCUSS EXPERIENCES / RECRUITMENT

Throughout 2023, seven (7) faculty members from four (4) departments traveled to Portland, New Orleans, Los Angeles, Chicago, Austin, Louisville, and Washington, D.C. for their respective professional/academic conferences, while tackling the additional task of networking with the goal of creating connections for long-term recruitment efforts. STEM and SBE faculty did this in exchange for ADVANCE funding. On December 7, 2023, six (6) conference-goers gathered with faculty, deans, and the Vice Provost to talk about their experiences and feedback with this type of recruitment. Most participants were given a recruitment flyer that



described Milwaukee, MU, and their specific department, to distribute to contacts they made. It was mentioned that business cards with a QR code that leads to department webpages would be a good tool for recruitment purposes. All information collected from conferences should be given to Department Chairs. Thank you to

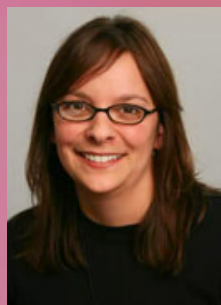
Dr. byrd, Dr. Crampton, Dr. Deshpande, Dr. Turner, Dr. Velez, Dr. Ventura, and Ms. Vigil for taking the time to learn and recruit at your conferences.

ATTENTION WOMEN & NON-BINARY FACULTY

ADVANCE & IWL are planning to host an event this semester supporting women and non-binary faculty in research. **Please complete this survey to help us narrow down the scope of the event. Tell us what you'd like to see.** There are 4 quick questions!

[CLICK HERE FOR THE SURVEY](#)

ADVANCE Spotlight February 2024



Dr. Lisa Edwards, Professor in the Department of Counselor Education and Counseling Psychology, has been named the new Director of the Institute for Women's Leadership (IWL) at Marquette, succeeding Dr. Jennica Webster. She

also directs the Culture and Well-Being Research Lab in CECP. Edwards' research focuses on multicultural counseling, positive psychology, and the intersection of strengths and culture. Together with her lab she recently launched Proyecto Mamá, a grant-funded resource and needs assessment of perinatal mental health among Latinas in the Milwaukee area. **Thank you, Lisa**, for all your hard work in making Marquette a more equitable and supportive community!

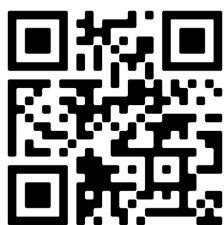
[SUBMIT A NOMINATION](#)

UPCOMING EVENTS

Building a Mentoring Culture: Part 2
Mon Feb 12 / 12-1 PM / 707 HUB

Learn about our new faculty mentoring program. Provide feedback and learn more about how you can participate!

[Click here to RSVP by February 8](#)
Lunch will be provided



ADVANCE DEPARTMENTS

STEM:

1. Biological Sciences
2. Biomedical Engineering
3. Biomedical Sciences
4. Chemistry
5. Civil, Construction and Environmental Engineering
6. Computer Science
7. Electrical and Computer Engineering
8. Mathematical and Statistical Sciences
9. Mechanical Engineering
10. Physics

SBE:

1. Economics
2. Educational Policy and Leadership
3. Counselor Education and Counseling Psychology
4. Political Science
5. Psychology
6. Social and Cultural Sciences

ENCOURING STUDENTS TO APPLY FOR U-RISE

U-RISE is an NIH-funded 2-year undergrad program that includes mentored research experience, coursework, travel to scientific conferences, and professional development within an inclusive community to prepare U-RISE scholars to succeed in a biomedical research-focused Ph.D. program after graduating from Marquette.



U-RISE scholars also receive ~\$12,000/yr stipend and scholarship support up to \$16,000 in addition to travel support for conferences and summer research training. Eligible applicants include sophomores of all STEM majors from an underrepresented group in the biomedical sciences as defined by the NIH. **Applications are due February 19, 2024.** Virtual Info Session: 1/24/24 6pm. Learn more: [U-RISE at MU website](#)

WE LOVE FEEDBACK!

[CLICK HERE](#) TO SUBMIT AN ANONYMOUS FEEDBACK FORM. THANK YOU!



MARQUETTE UNIVERSITY

BE THE DIFFERENCE.