

# Straz Hall Self-Guided Tour

## *the New Home for the College of Nursing*

Time Allotted: 30 Minutes

### Welcome to David A. Straz, Jr. Hall!

Throughout your tour, you'll notice six key design elements that reflect our priorities:

- **Fostering student success**
- **Flexible & versatile spaces**
- **Equitable, inclusive, & accessible space**
- **Building a sense of community & pride**
- **Operational efficiency & flow**
- **Design for overall wellness**

The student-centered areas are designed for recharging, collaborative learning, solitary study and reflection. The first three floors are dedicated to student learning, while the fourth floor houses administrative offices and includes two additional classrooms, a wellness room and collaborative spaces. The fifth floor houses our research center and research-active faculty offices.

### Preserving History:

Construction crews discovered a 1950s-era time capsule during renovation. To preserve this tradition, a 2024 capsule was placed in the vestibule walls with items such as a stethoscope, nursing pins, a vintage magazine, class notes, a diversity statement, and a letter from former President Michael R. Lovell highlighting the building's significance.



### Transformation & Impact:

Straz Hall is a combination of four structures. The original was built in the 1950s with additions in 1983, 1998 and 2024. During construction, spaces previously only reachable by stairs were replaced with accessible additions.

The move to Straz Hall increased the college's available space from 46,000 to 103,000 square feet and doubled the size of the center for clinical simulation. This growth allows the significant expansion of incoming class sizes to meet the growing demand for nurses in Wisconsin and beyond.

### Project Specs:

- Total project cost: \$42 million
- Square footage: 103,000 GSF
- Builder: J.H. Findorff & Son Inc.

Operating hours are 7am-5pm weekdays, with swipe ID access until 9 p.m.

## FIRST FLOOR:

At the building's entrance, ivy-covered pre-cast panels add greenery and softness. Visitors are greeted by a large-scale art installation featuring a staff enveloped in medicinal plants of lavender and chamomile, which reinterprets the rod of Asclepius, a symbol of healing. The **five-story atrium** allows for ample sunlight. The building has earned a Fitwel certification in recognition of successful health-forward design.

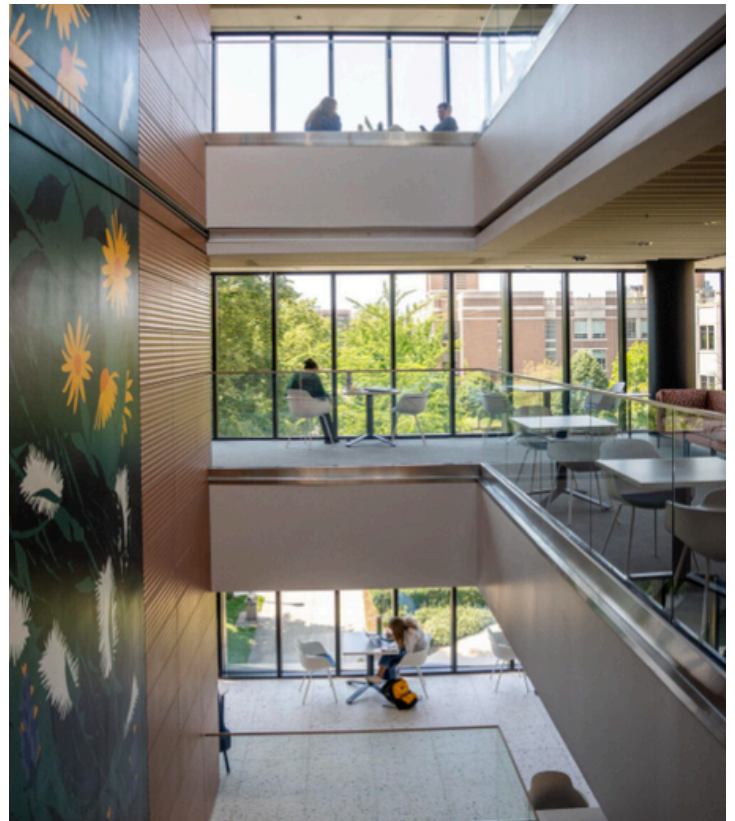


▶ **Room 116** is one of five large classrooms on the first floor designed for hi-flex, active learning. Its atrium window offer a beautiful view of green spaces and the Church of the Gesu.



A dedicated lactation room and two additional wellness rooms on the first and fourth floor ensure all learners have access to necessary resources and private spaces.

▶ **The Helene Fuld Health Trust Center for Nursing Student Success** is centrally located. It houses academic advisors and Project BEYOND-2 mentors for students from underrepresented populations. A respite room provides a quiet space for reflection.



## SECOND FLOOR:

▶ **Marquette Nurse Commons**, located to the left off the elevator, is the heart of the building. Designed for study, rest, and community, this space overlooks a garden of native Wisconsin plants, which was nominated for an award from the American Society of Landscape Architects.

Turning right off the elevator brings you to an **outdoor terrace** alongside an indoor student lounge, both offering beautiful views of St. Joan of Arc Chapel.

▶ **The Skills Lab**, adjacent to the lounge, is designed for practice in foundational health assessments and features a variety of medical equipment for students to gain skills in various techniques such as taking patient vitals. The lab also has a mock hospital bathroom.





## 3RD FLOOR:

▶ **The Ascension Wisconsin Center for Clinical Simulation and Learning** comprises the entire third floor of the building and houses the Center's offices, clinical simulation labs, after-hours practice rooms and a debrief suite. The Center supports critical judgment and decision-making practice through simulated real-life care scenarios. Stop by the **maternity sim lab** or the **pediatric sim lab!**



Our mannequins offer realistic training; they are able to give birth and change ages. The **hospital hallway** mimics a clinical setting with Pyxis medication dispensing and wide hallways for rounds with interprofessional teams.

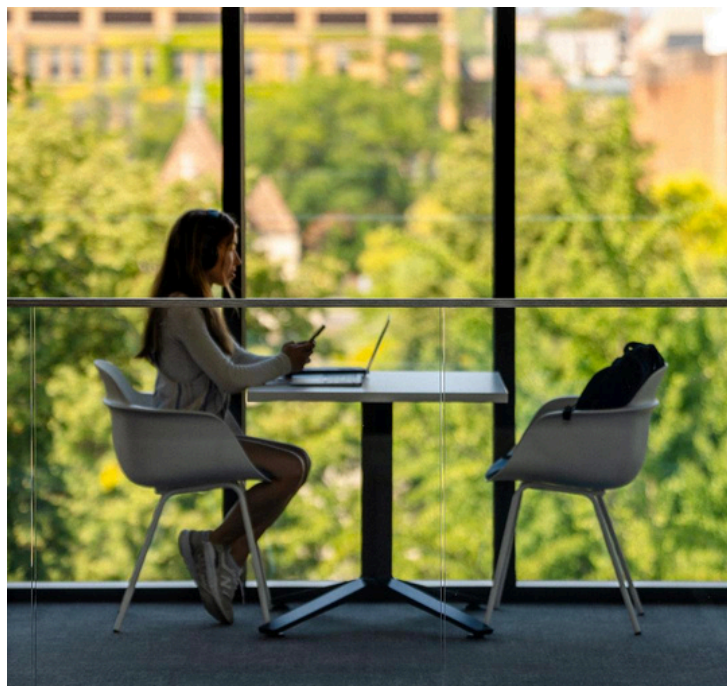
▶ **The OR simulation lab** provides a realistic training venue for nurse anesthesia students and interdisciplinary teams. Our Nurse Anesthesia DNP program admits 14 students per cohort, with graduates practicing in the Midwest and beyond.



▶ **The home health lab** on the north side of the building simulates an ordinary apartment and trains students in recognizing health barriers in home settings. Down the hallway lies a dedicated lounge for actors who serve as mock patients as well as a series of outpatient-style exam rooms.

## FOURTH FLOOR:

The fourth floor combines administrative and student spaces for dynamic team functioning. The dean's proximity to classes held on this floor fosters engagement. In addition to several conference rooms and huddle spaces, this floor offers quiet study spaces, a wellness room and lounges adjacent to faculty offices, encouraging student-faculty interaction.



## FIFTH FLOOR:

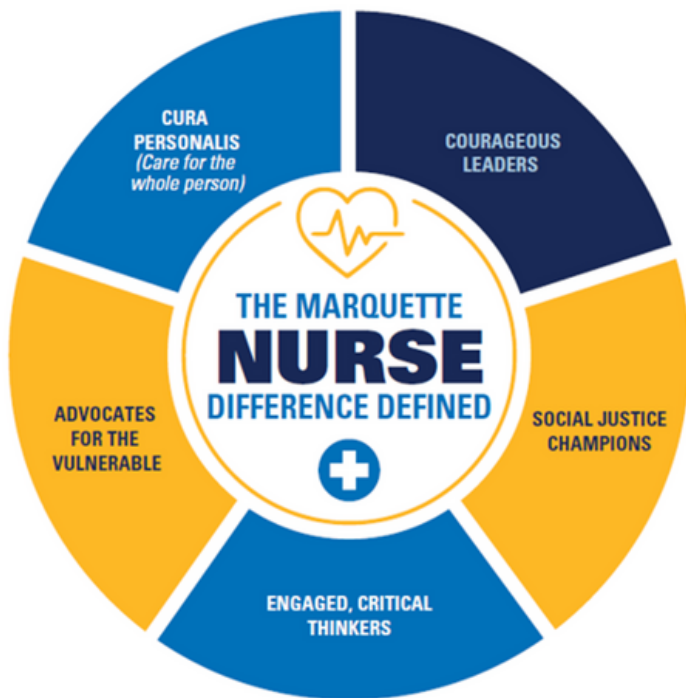
▶ **The Minhas Research Collaboration Center** houses research-focused faculty who work collaboratively with community members to define challenges and identify and implement interventions. Faculty members conduct over 30 research projects at any one time. This floor also houses the Boland Institute for Natural Family Planning, which is known worldwide for its integrative approach to reproductive health.



Enjoy your tour of Straz Hall and thank you for visiting the Marquette College of Nursing!

## CONSTRUCTION FUN FACTS:

- The strategically-located windows are made of “bird glass,” which features UV dots barely perceptible to humans but fully perceptible to birds.
- The interior stair and elevator cores, as well as the exterior of the building, are covered in white and brown Front-tek porcelain panels. Straz Hall is one of the first buildings in the U.S. to use this sustainable building product.
- Straz Hall stands 70 feet tall.
- Four Marquette students played a part in the project on Findorff, Staff Electric, and Marquette's teams.



## NURSING FAST FACTS:

- Each floor contains 1 of the 5 “Marquette Nurse” attributes (featured above) which emerged as themes from a survey of alumni, faculty, staff and employers.
- The College of Nursing has 65 full-time faculty, 120 part-time faculty & 35 staff.
- The College has 9,000 living alumni.
- Nursing at Marquette began in 1936 as a 4-year degreed program.



Dr. Jill Guttormson, dean of the College of Nursing, taught at Marquette for 11 years before becoming dean. She is from a small town in northern Wisconsin, earned her undergraduate degree at UW-Madison, and completed graduate work at the University of Minnesota. She is a well-loved faculty member by her students who affectionately call her “Dr. G.” She lives in Wauwatosa and has two daughters with her husband, Eric. She was a critical care nurse, which informs her research interests in communication with intubated ICU patients.

## DEAN'S FUNDING PRIORITIES:

**Scholarships:** With the immense growth of the student body in the College of Nursing, the need for scholarships has never been greater.

**Nursetech Fund:** We are the first nursing school in the nation to use the new Lyceum nursing education platform from Epic which allows our pre-licensure nurses to be well-trained in the use of electronic records in clinical settings. Donations help cover the cost of use for Marquette students.

**Community-Engaged Research Support:** Collaborative research between nursing faculty and members of local communities that positively impact health outcomes is a top priority for the college.

If you are interested in making a donation, please call Susan Nieberle, 414-288-8014.