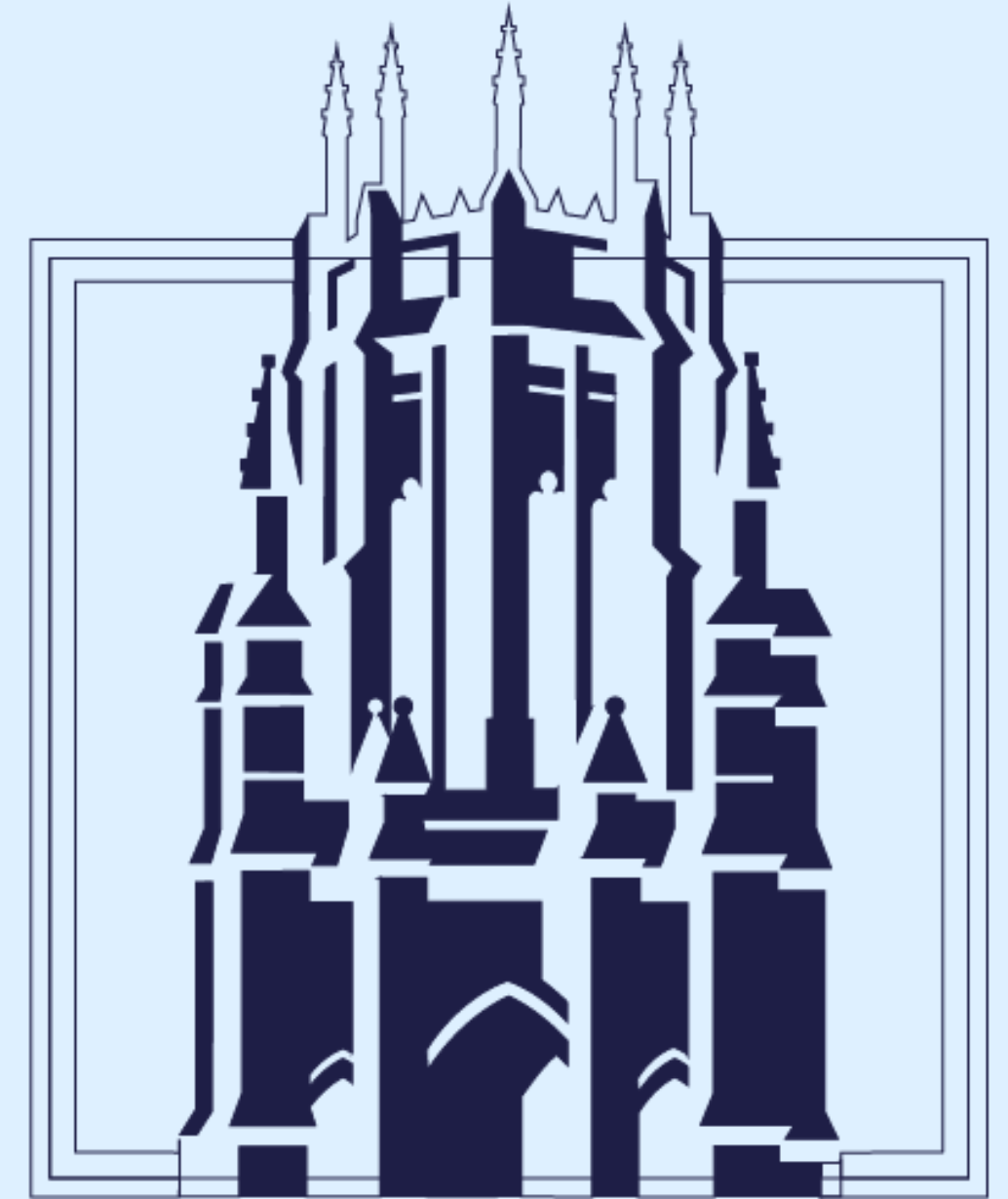


# MARQUETTE UNIVERSITY

## SERVICE LEARNING PROGRAM



**BE THE  
DIFFERENCE.**

## What is service learning?

Service learning allows students to engage with community-based organizations that directly relate to their academic coursework, creating a space for students to integrate classroom knowledge with practical experience to grow both their understanding and application of their course

## Where do you participate in service learning?

Service learning can take place in various settings, including local communities, nonprofit organizations, schools, and other community-based agencies. We partner with a range of community organizations to provide students with diverse and impactful service opportunities in Milwaukee.

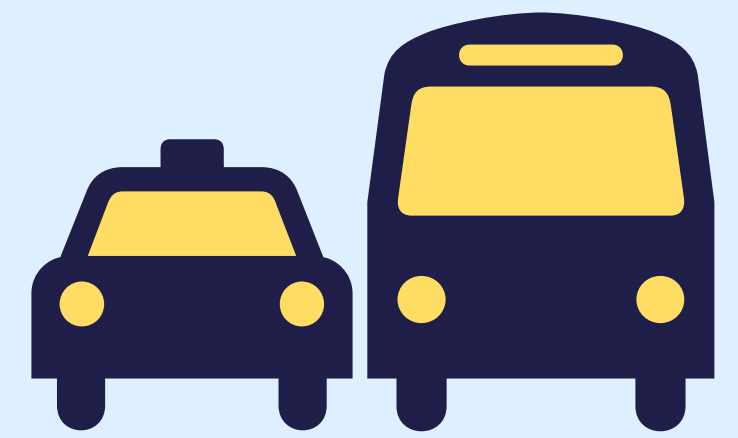
## What is the purpose of service learning?

The primary focus of Marquette's Service Learning Program is the learning aspect. While the service provided should benefit the community agencies, the program prioritizes placing students in roles where they can directly experience, observe, and practice the concepts they are learning in the classroom. This approach ensures that students gain significant educational value from their service experiences to engage in activities that enrich their academic, professional, and personal growth.

## What do you gain from service learning?

Academic Enhancement: Deepens understanding of course material by applying it in real-world contexts.  
Skill Development: Builds critical skills such as leadership, teamwork, problem-solving, and communication.  
Personal Growth: Encourages self-discovery and personal development.  
Civic Engagement: Fosters a sense of social responsibility and commitment to community service.  
Career Preparation: Provides practical experience and networking opportunities that are valuable for future career paths.

# TRANSPORTATION



## Marquette's Resources

- Make use of the **Umo Mobility app** to help schedule your bus routes.
- Reach out to the **Student Coordinators** if you need help **arranging carpools, setting up a bus buddy group, or walking group to your site.**
- You may use the **EagleExpress** but remember it **does not travel outside the normal routes or times** for service learning.

## Personal Resources

- Students may use **rideshare apps like Lyft or Uber** if they are willing to spend their own money.
- Students may use various GPS systems to guide them to their service sites including **Google Maps, RIDE MCTS, Apple Maps, etc.**

## Safety Resources

- Always be aware of your surroundings.
- Watch the **Service Learning Safety Video** prior to your site orientation at:  
<http://www.marquette.edu/servicelearning/safety.shtml>
- **MUPD Non-Emergency**  
414-288-6800
- **MUPD Emergency**  
414-288-1911

# OUR EXPECTATIONS

- Commit to **18-20 hours of service** over the semester (approximately 2-3 hours per week).
- Ensure your participation spans the **entire semester**, even if you fulfill your hours early.
- **Align your actions with course objectives**; seek guidance from your professor or site contact if you're struggling to make connections.
- **Uphold site expectations**, ensuring appropriate dress and completion of mandatory training or checks.



# REFLECTION SESSIONS



- Students may be required to attend one reflection session throughout the semester.
  - *Reflection sessions allow students to make sense of their interactions with others, understand the broader context of service. These sessions provide a space to connect our thoughts, feelings, and practical experiences, fostering a deeper understanding of ourselves and our community.*

# REFLECTION SESSION INFORMATION

## **Amar y Servir a Todos: To Love and Serve Everyone (Sponsored with Mission Week & Office of Mission and Ministry)**

- *As part of Mission Week, this interactive event invites students to explore stereotypes and implicit bias through stories shared by diverse community members, reflecting on our self-awareness, empathy, and a commitment to inclusion. Inspired by Dr. Marija Bjegovich-Weidman's work with the Human Library experience, the session is open to all Marquette students and requires full attendance due to its extended duration.*
  - Wednesday, February 5, 3-5pm, AMU Ballrooms

## **MKE 1001**

- *Learn about Milwaukee's rich history and discover your role within the community through a documentary and discussion. This session aims to deepen your understanding of the city's strengths and challenges.*
  - Monday, February 10, 2:30-4pm, AMU 157
  - Thursday, February 13, 3-4:30pm, AMU 157

## **Food For Today: Hunger, Food Access, and Poverty**

- *This interactive session, conducted with support from the Hunger Task Force, offers a simulation to explore food insecurity, focusing on who is most at risk and the importance of safety nets in preventing hunger and starvation. Participants will also learn about current advocacy efforts to ensure access to healthy food.*
  - Wednesday, February 26, 4:30-6pm, AMU 157
  - Friday, February 28, 2:30-4pm, AMU 157

## **Social Determinants of Mental Health**

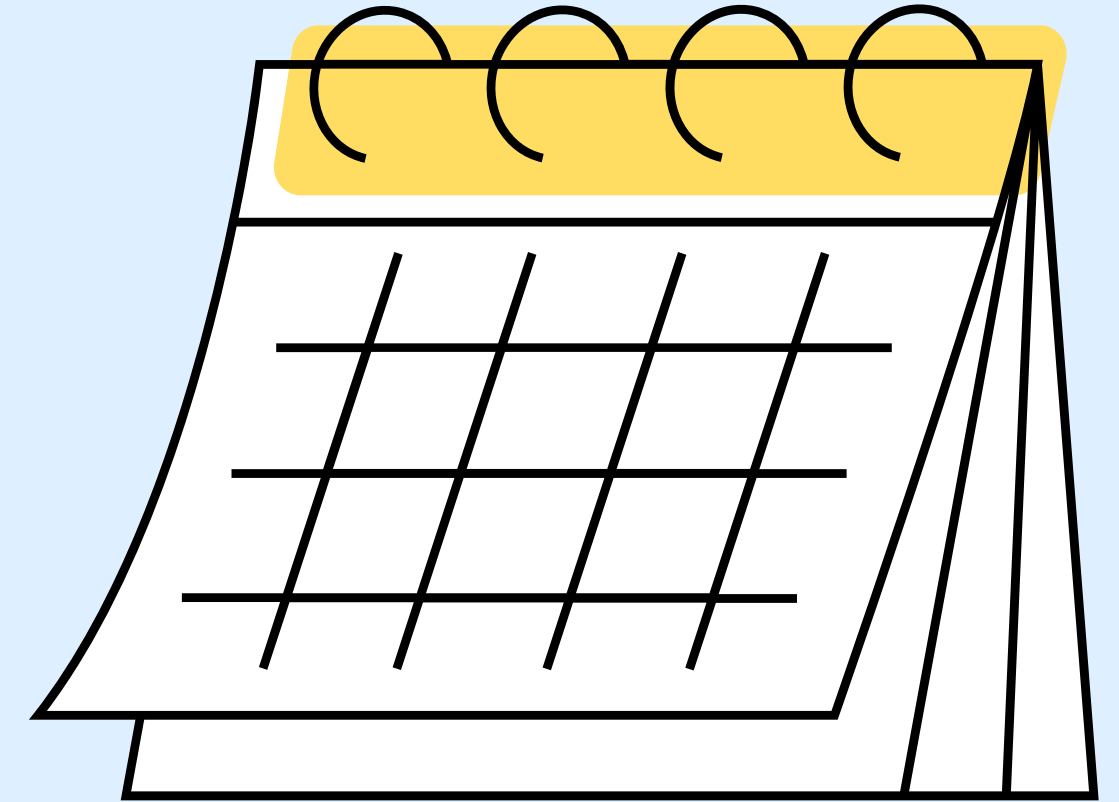
- *Mental health is crucial for well-being, yet it has been identified as the top health issue in Milwaukee County, where 1 in 4 adults have a mental health condition. This session will explore what social barriers & issues affect mental wellness, create trauma, and their impact the community well-being, while brainstorming changes to address the crisis.*
  - Tuesday, March 25, 12:30pm-1:50pm, VIRTUAL
  - Sunday, March 30, 3-4:30pm, VIRTUAL

## **We Are the Change That We Seek**

- *During your semester of service learning, we are sure that you saw many wonderful community resources and community assets, but also many things that need to change to create an inclusive and equitable community. In this session, students will reflect on what needs to change and identify steps for working towards justice.*
  - Friday, April 11, 9-10:30am, AMU 157
  - Tuesday, April 22, 5-6:30pm, AMU 157
  - Monday, April 28, 5-6:30pm, AMU 157

# IMPORTANT DATES

- Registration opens **January 22nd at 12pm** and ends **January 29th at 5pm.**
- **Safe Environment Trainings** are **January 30th from 2-5pm (Lunda Room)** or **January 31st from 9-12pm (AMU 227)**. This is only required if serving at Catholic institution or school.
- Late registrations will need to meet with the Director or Assistant Director for placement. **After February 14th, we will no longer be placing students.**



# LOGGING HOURS

- Log your impacts after each visit to your site.
- Make sure you log your impacts to ALL the correct places.  
*Ex: You logged at your site & logged under your template on MUEngage.*
- **Hours will be verified twice** during the semester-  
**during midterms and finals.** Ensure your hours are updated regularly, so your professors get an accurate report.
- If you have multiple classes, **share your impacts with all of your classes** that require service learning.





# INDEPENDENT VOLUNTEER AND CURRENT VOLUNTEER FORMS

## Independent Placement Form

- Students wishing to complete service learning at a organization that does not partner with the Service Learning Program.

## Key Points

- Check the Current Community Partner list to see if your organization partners with the Service Learning
- Submit the form to our office in order to log your hours for credit and submit a signed timesheet for verification.
  - Both logging hours in MUEngage and submitting a timesheet are mandatory to receive credit.
  - Timesheets must be submitted by the last week of classes.
- Professor must sign off on the form before it can be processed by our office
- Email the form to [servicelearning@marquette.edu](mailto:servicelearning@marquette.edu) or turn it in in person at the 707 Building, Suite 303.

## Current Volunteer Form

- Students choosing to volunteer/continue volunteering at an organization that is partnered with the Service Learning Program

## Key Points

- Professor must sign off on the form before it can be processed by our office.
- Email the form to [servicelearning@marquette.edu](mailto:servicelearning@marquette.edu) or turn it in in person at the 707 Building, Suite 303.

# BEST PRACTICES FOR STUDENTS




**CHECKING  
EMAILS  
DAILY**



**BUILDING  
RELATIONSHIPS**



**LIMITING  
PHONE  
USAGE**



**MAINTAINING A  
POSITIVE  
ATTITUDE**



**COMMUNICATING  
EFFECTIVELY**



**COLLABORATING  
WITH COMMUNITY  
PARTNERS**



**NOT ADOPTING A  
SAVIOR MENTALITY**



**DEMONSTRATING  
COMMITMENT AND  
ENGAGEMENT**

# STILL CONFUSED?

- Watch the instructional video on MUEngage on the Service Learning Website.
- Reach out to the Service Learning staff with any questions as soon as possible



# NEED MORE INFO?

Instagram:

- @mu.servicelearning

General Email:

- servicelearning@marquette.edu

Phone Numbers:

- 414-288-3262
- 414-288-3264

Staff Contact Information:

- <https://www.marquette.edu/service-learning/about-us.php>

